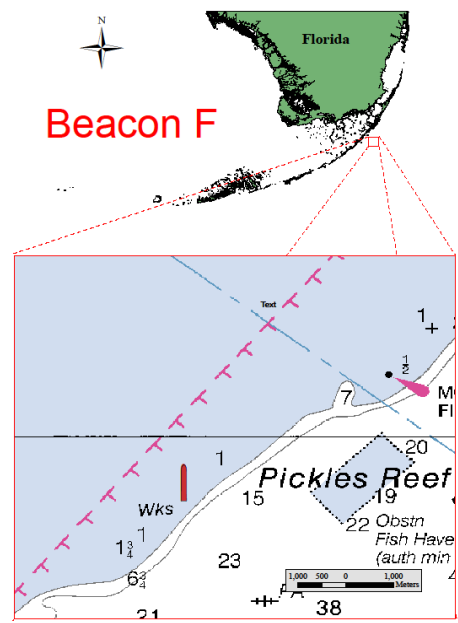
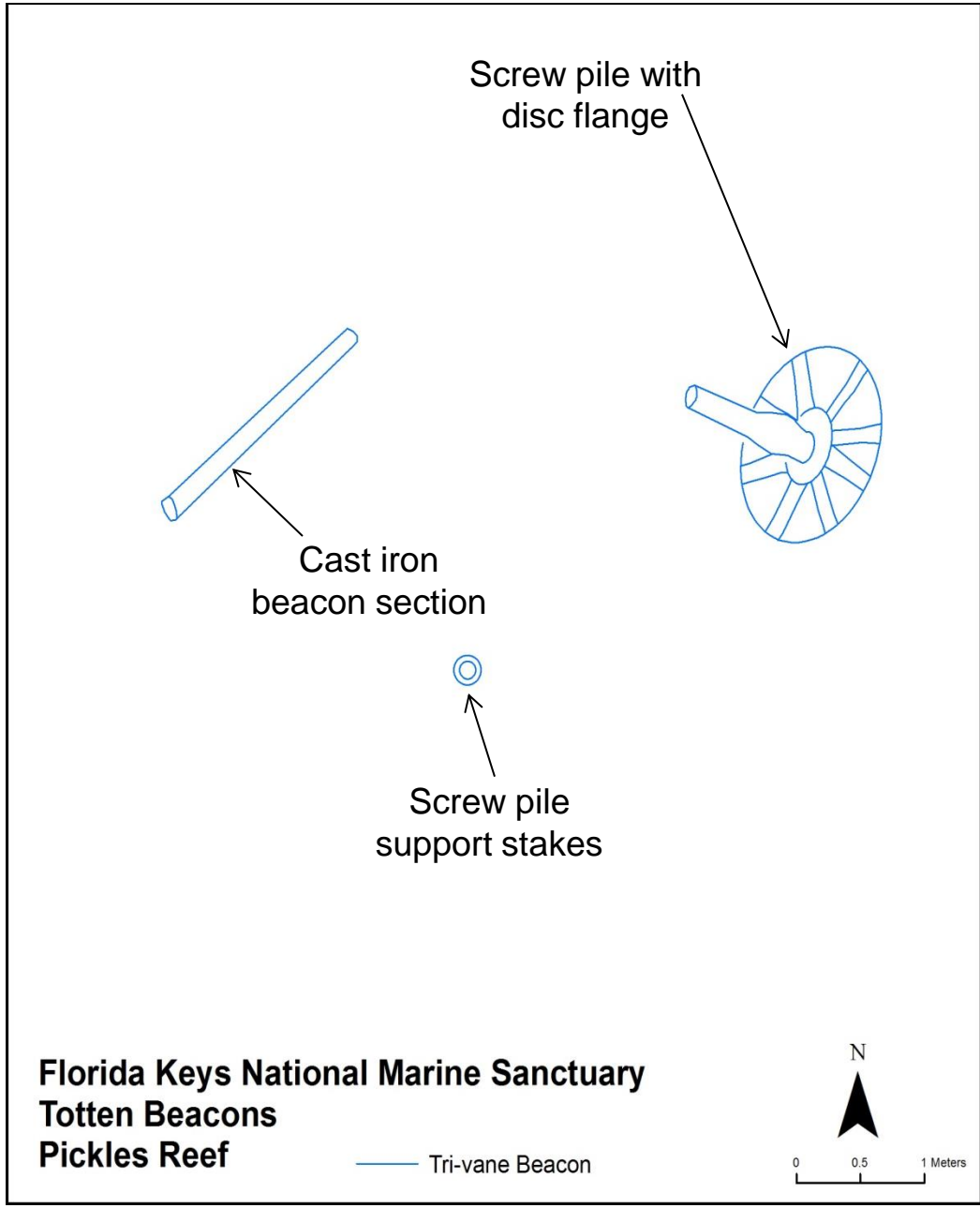




Pickles Reef



Location:
24° 59.459' N
080° 24.897' W

Depth: 10'

- 5.7 nautical miles SE of Key Largo.

Archaeological sites in Florida Keys National Marine Sanctuary are subject to rules and regulations. Please remember to “Take only photos and leave only bubbles.”

<http://floridakeys.noaa.gov/historic-navigation-aids/>