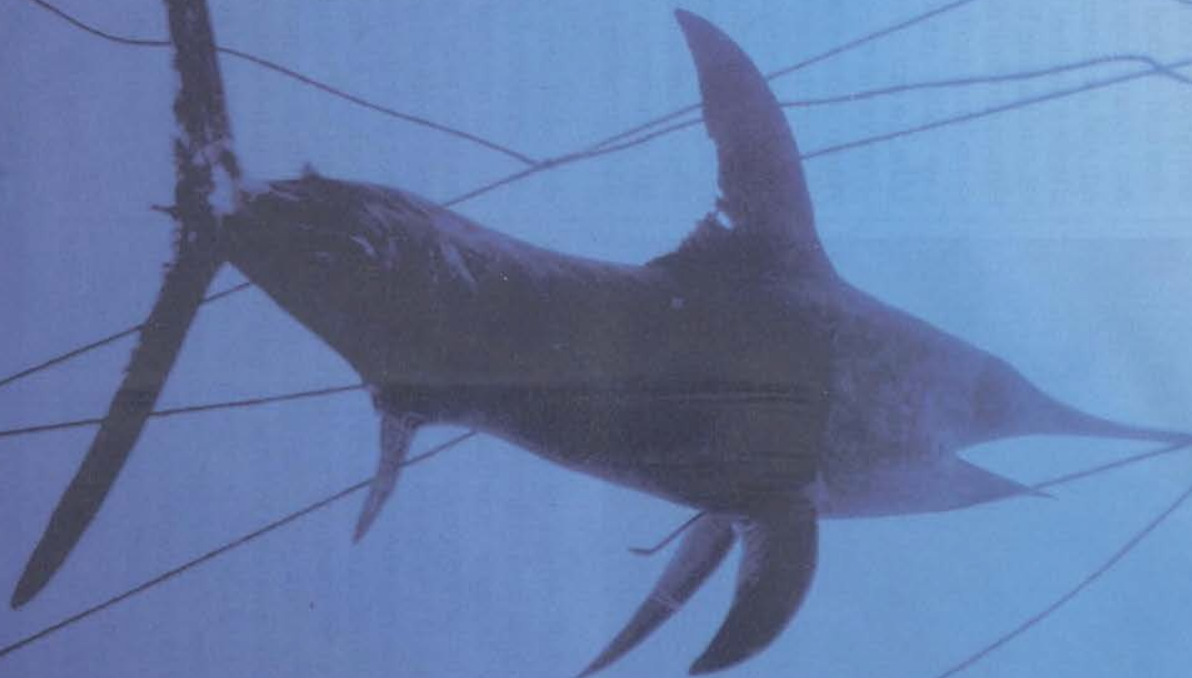


Office of General Counsel Enforcement Section



(GCES)

Categories of Enforcement Actions

Outreach & Education

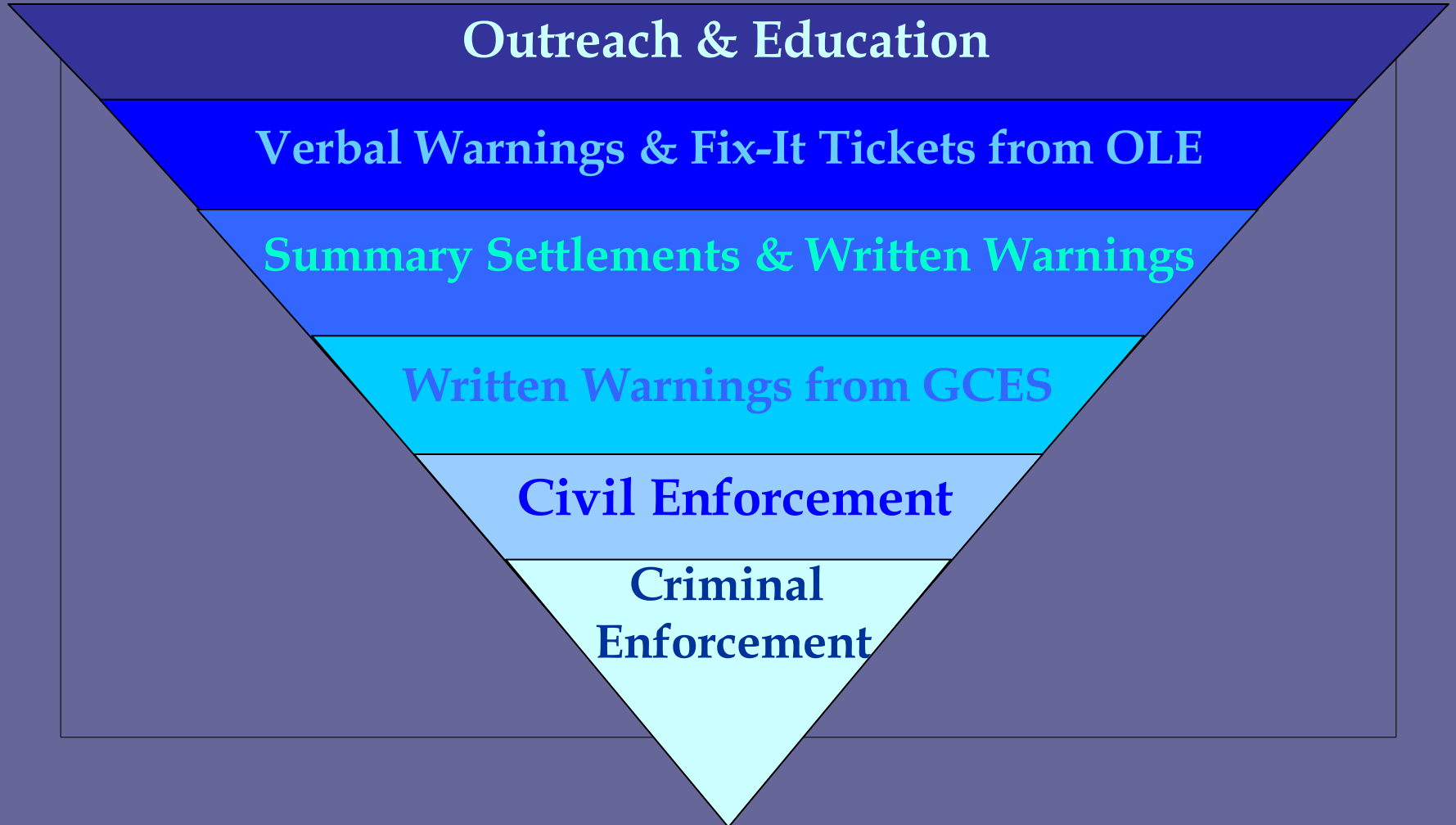
Verbal Warnings & Fix-It Tickets from OLE

Summary Settlements & Written Warnings

Written Warnings from GCES

Civil Enforcement

**Criminal
Enforcement**



National Marine Sanctuaries Act

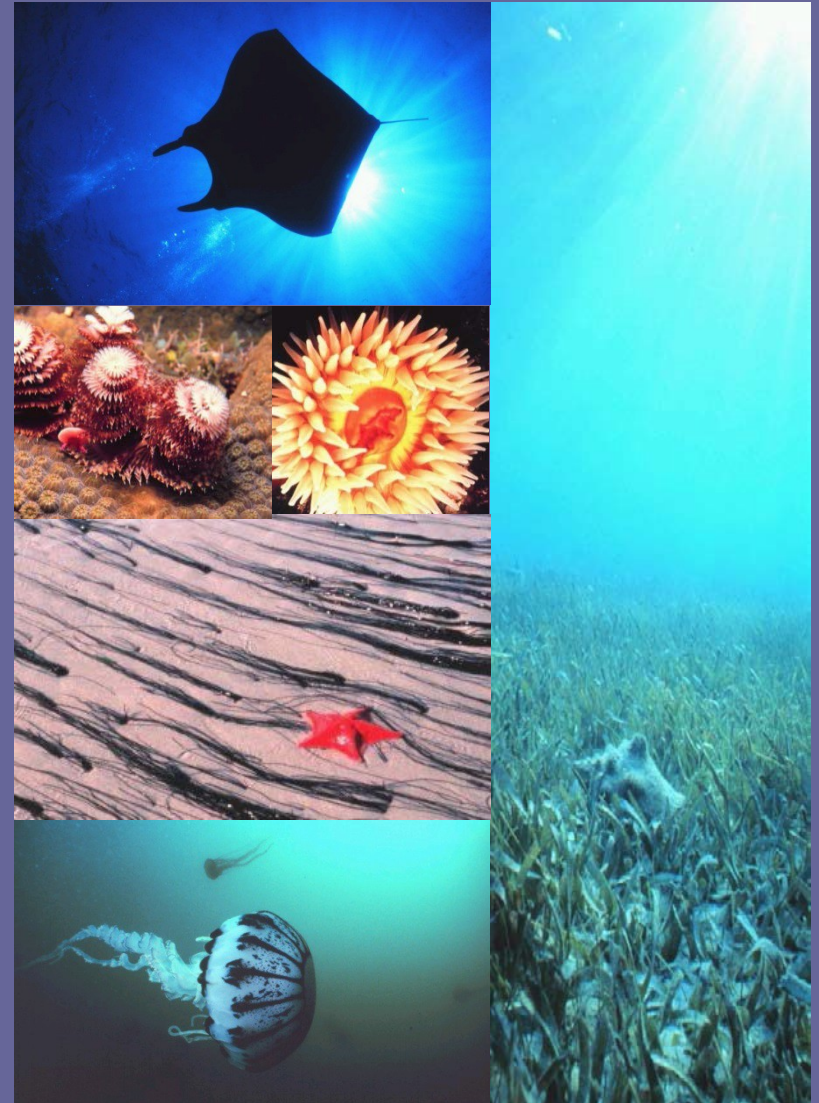
GOAL – Designation of marine areas of special national significance.

PROHIBITIONS – Unlawful to destroy, cause the loss of, or injure sanctuary resources, and to possess, sell or trade in sanctuary resources.

AUTHORITIES – Strict Liability

AUTHORITIES
Maximum penalty \$140,000 for each violation and each day of a continuing violation.

Allows seizure and forfeiture of vessels used and sanctuary resources taken in violation.



Life Cycle of a Typical Administrative Enforcement Case



Visit GCES on the Web

Offices

Case Law

FAQs

Links

Procedural
Regulations

Penalty
Schedule



<http://www.gc.noaa.gov/enforce-office.html>